

REV	DESCRIPTION OF REVISION	By	DATE	APPROVED
A	INITIAL RELEASE	C. Cai	2025/4/30	C. Chen

TECHNICAL DATA

► Electrical Data

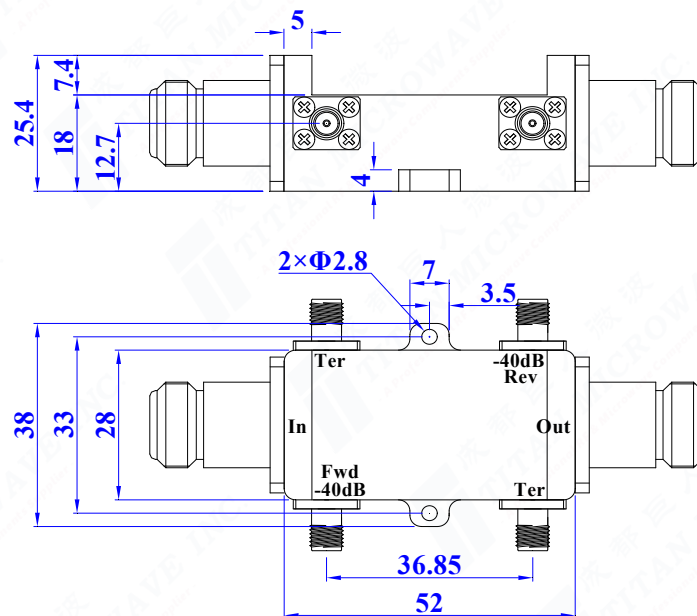
Frequency Range	2~8GHz
Coupling	40±1.0dB
Coupling Flatness	±0.7dB max
Insertion Loss	0.3dB max
Primary Line VSWR	1.4:1 max
Coupled Line VSWR	1.7:1 max
Directivity	12dB min
Impedance	50 Ohms
Primary Line Power	150W(CW)

► Mechanical Data

Primary Line Connectors	N-Female
Coupled Connectors	SMA-Female
Housing Material	Aluminum
Surface Finish	Conductive Oxidation
Dimensions	52×28×25.4mm

► Environmental Data

Operating Temperature	-55℃~+85℃
-----------------------	-----------



Notes:

- ALL SPECIFICATIONS ARE SUBJECT TO CHANGE WITHOUT NOTICE AT ANY TIME
- CUSTOMER OUTLINE DRAWING FOR REFERENCE ONLY

DRAWN: L. Ma 30/04/25		
ENGINEER: J. Zhu 30/04/25		
APPROVED: C. Chen 30/04/25		
TOLERANCE UNLESS OTHERWISE SPECIFIED		
x	±0.50	[0.019"]
.x	±0.20	[0.008"]
.xx	±0.10	[0.004"]
ANGLES	±1°	

TITLE:

Dual Directional Coupler,
2~8GHz, 40dB, 150W,
N-Female & SMA-Female

PART No.:

TDDC-02000800-40NS150



www.titan-microwave.com



DIMENSIONS IN MILLIMETERS(mm)

SIZE: A4	SCALE:	SHEET: 1/1	REV: A
-------------	--------	---------------	-----------