

REV	DESCRIPTION OF REVISION	By	DATE	APPROVED
A	INITIAL RELEASE	C. Cai	2021/3/13	C. Chen

TECHNICAL DATA

► Electrical Data

Frequency Range	2~2.4GHz
Insertion Loss	0.5dB max
Isolation	18dB min
VSWR	1.3:1 max
Impedance	50 Ohms
Forward Power(CW)	100W
Reverse power	100W
Rotation	Clockwise

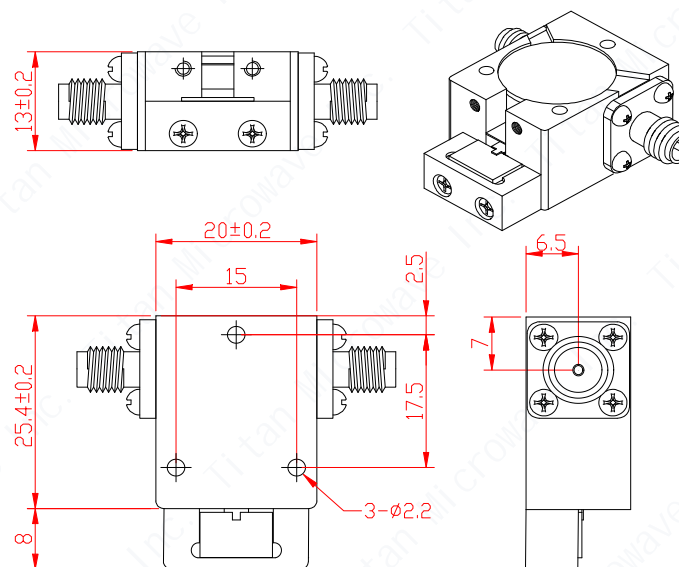
► Mechanical Data

Input/Output Connectors	SMA-Female
Material	Aluminum
Surface Treatment	Nicke Plated
Dimensions	20×25.4×13mm
Weight	50g

► Environmental Data



Operating Temperature	-30℃~+70℃
Storage Temperature	-50℃~+90℃

All the materials are RoHS Compliance



Notes:

- ALL SPECIFICATIONS ARE SUBJECT TO CHANGE WITHOUT NOTICE AT ANY TIME
- CUSTOMER OUTLINE DRAWING FOR REFERENCE ONLY

DRAWN: L. Ma 13/03/21	TITLE: Coaxial Isolator, 2~2.4GHz, 100W, SMA-Female	 www.titan-microwave.com		
ENGINEER: J. Zhu 13/03/21				
APPROVED: C. Chen 13/03/21		 DIMENSIONS IN MILLIMETERS(mm)		
TOLERANCE UNLESS OTHERWISE SPECIFIED				
x ±0.50 [0.019"]	PART No.: TMCI-02000240-100	SIZE:	SCALE:	SHEET:
.x ±0.20 [0.008"]		A4		1/1
.xx ±0.10 [0.004"]				REV:
ANGLES ±1°				A