

Product Features

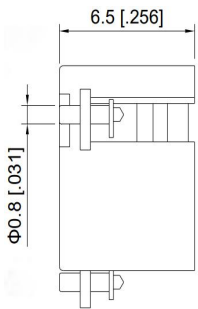
- Power handling up to 30W
- Low Insertion Loss
- High isolation within operational band
- Custom design available upon request
- SMT Connector type
- Operating temperature range -20°C ~ +60°C



SPECIFICATIONS

Outline Drawing(mm[inch])	Model Number	Frequency Range (MHz)	Insertion Loss (dB. max.)	Isolation (dB. min.)	VSWR (max.)	Forward Power (W)	Reverse Power (W)
Front View 	TSMC9065-04800580-30	4800~5800	0.5	18	1.3	30	30
	TSMC9065-04900590-30	4900~5900	0.5	18	1.3	30	30
	TSMC9065-05000550-30	5000~5500	0.4	20	1.25	30	30
	TSMC9065-05000600-30	5000~6000	0.5	18	1.3	30	30
	TSMC9065-05500600-30	5500~6000	0.4	20	1.25	30	30
	TSMC9065-06000700-30	6000~7000	0.5	18	1.3	30	30
	TSMC9065-07900840-30	7900~8400	0.4	20	1.25	30	30
	TSMC9065-08500950-30	8500~9500	0.4	20	1.25	30	30
	TSMC9065-08701050-30	8700~10500	0.5	18	1.3	30	30
	TSMC9065-09001000-30	9000~10000	0.4	20	1.25	30	30
	TSMC9065-10001050-30	10000~10500	0.4	20	1.25	30	30

Side View



Back View

